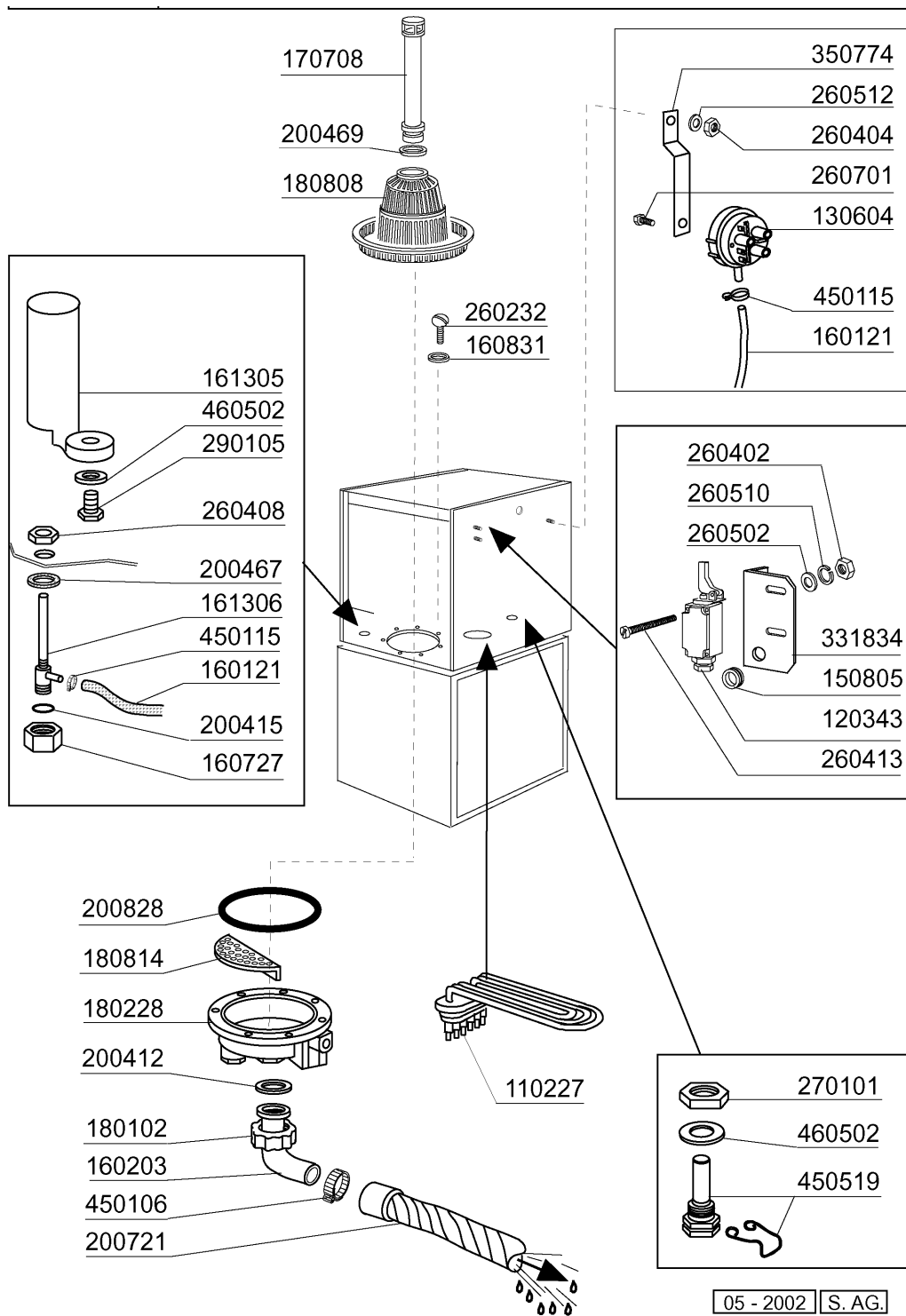


11-1998 S.AG 01

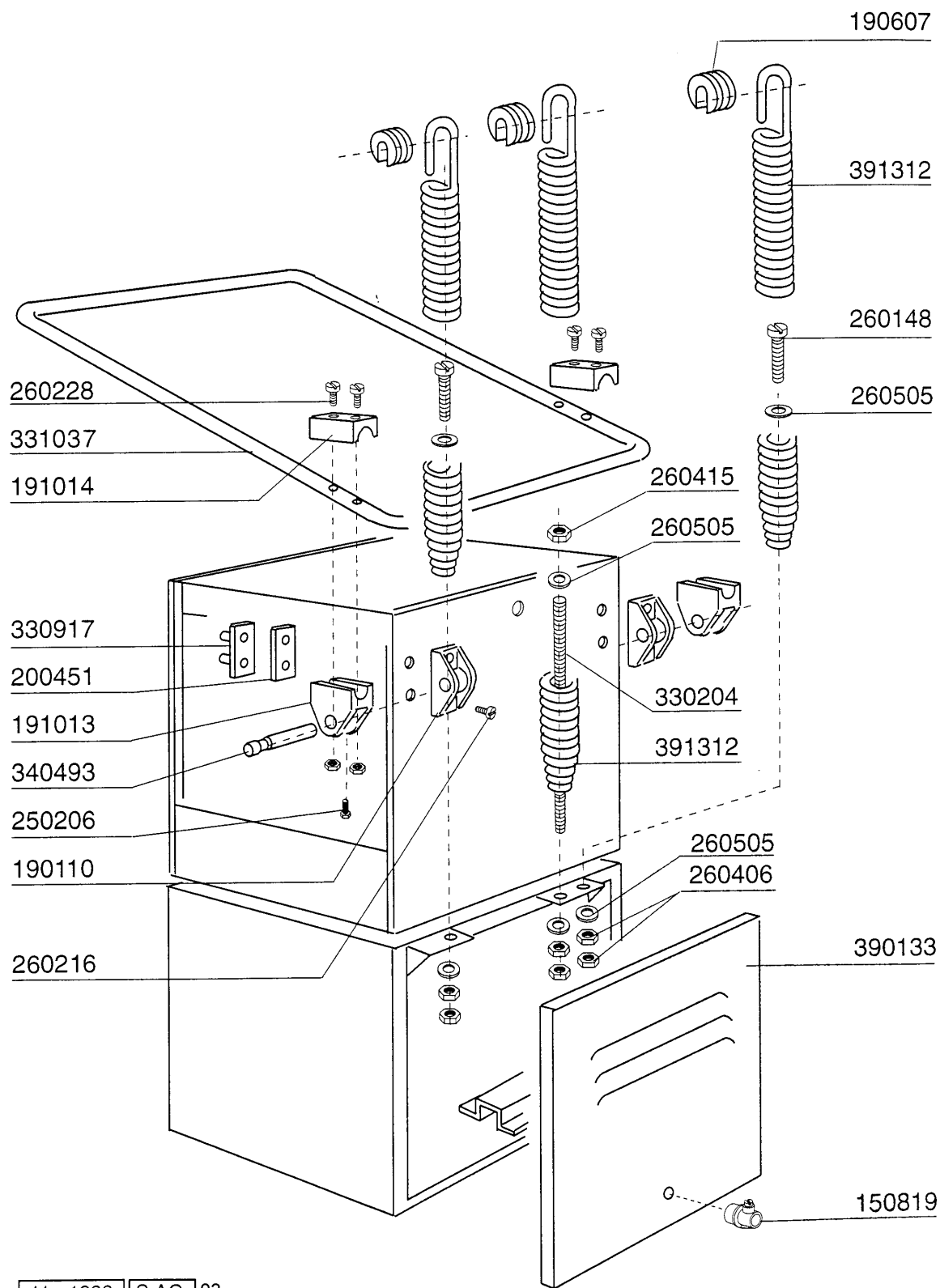
2 - Hood

CODE	DESCRIPTION
160509	FOOT SUPPORT
160811	WASHER F2 18X8.5X1 ALGOF
161110	BACK COVER S90-C85-140
180605	RIGHT GUIDE F. DOOR C30-70
180606	LEFT GUIDE F. DOOR C30-70
190637	GUIDE FOR DOOR "C"
190638	ROLLER FOR "C" DOOR GUIDE
200402	SELF-ADHES.RUBB.SPONGE STRIPS
200433	SPONGY RUBBER RECT. 6X2,5 ADHE
210203	RUBBER FOOT 30 MM
260147	SCREW TE 8X12 SPECIAL
320627	FIXING PLATE F.GUIDES C30-70
320927	DOOR C30 C70
321970	GUIDE
331919	SPLASH GUARD FOR C75 (NEW HOOD)



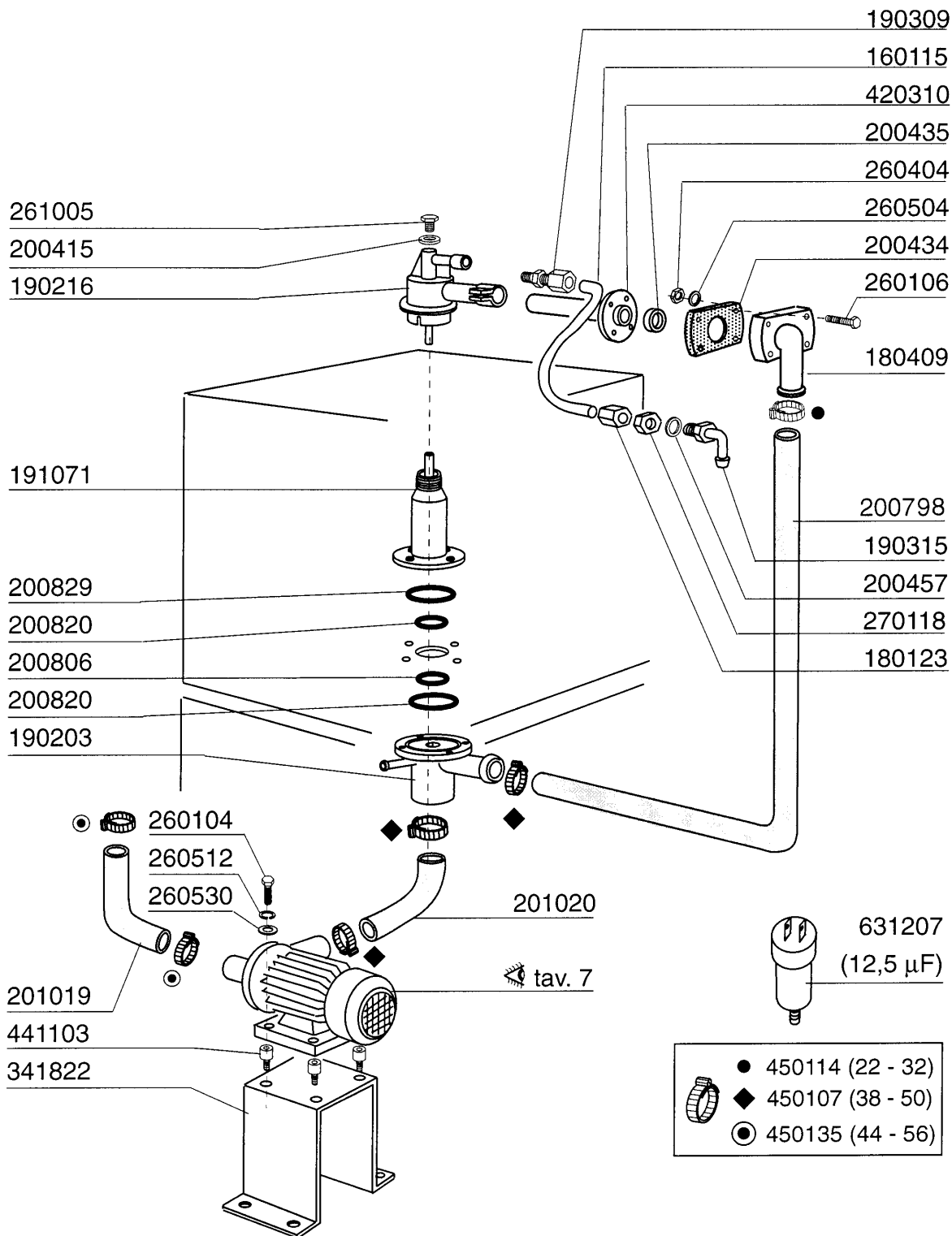
3 - Tank

CODE	DESCRIPTION
110227	HEAT. ELEMENT 3000W 230/400V
120343	MICRO SWITCH (120364)
130604	PRESSURE SWITCH 80-50 1 LEVEL
150805	CABLE HOLDER 18X22X1
160121	HOSE EPDM D. 5 X 9
160203	ELBOW 1"1/2 N-S-F-C /DRAIN
160727	PLUG 1/2 NTP CAP
160831	WASHER F2 17X6X3
161305	AIR CHAMBER F45-F80
161306	HOSE FOR AIR CHAMBER F45-80
170708	OVERFLOW PIPE H 215 X F3 C30-F
180102	DRAIN PIPE NUT 1"1/2 F45-55
180228	TANK SUCTION BASIN WITHOU.PRES
180808	STRAINER F2-45-55-80
180814	PROTECT.FILTER OF INLET PUMPE
200412	GASKET DRAIN 11/2" 45X33X3
200415	AIR TRAP GASKET -F2 18,5X10X3
200467	DUTRAL GASKET F. AIR TRAP
200469	STAND PIPE O RING 45X35,5X7
200721	DRAIN HOSE 28X35 2MT.
200828	O-RING 183,75X190,81X3,53
260232	STAINL.ST TB SCREW 6X25 B15-6-
260402	STAINLESS STEEL NUT D4 UNI 55
260404	STAINLESS STEEL NUTS D6 UNI 55
260408	S/S NUTS D.12
260413	STAINLESS STEEL NUTS D5 SPEC.
260502	S/S FLAT WASHER D.4
260510	GROWER WASHER D.4
260512	ST/ST GROWER WASHER D6
260701	SCREW 3,5X9,5
270101	HEXAGON LOCK NUT 1/2"
290105	BRASS-TE-PLUG 1/2"
331834	BRACKET FOR MICRO SWITCH C70-7
350774	BRACKET
450106	CLAMP FE ZN 32-44 H=12,2
450115	ELASTIC CLAMP D.8,3/7,8
450519	TANK THERMOSTAT SHIELD C-F
460502	GASKET 30X21X2



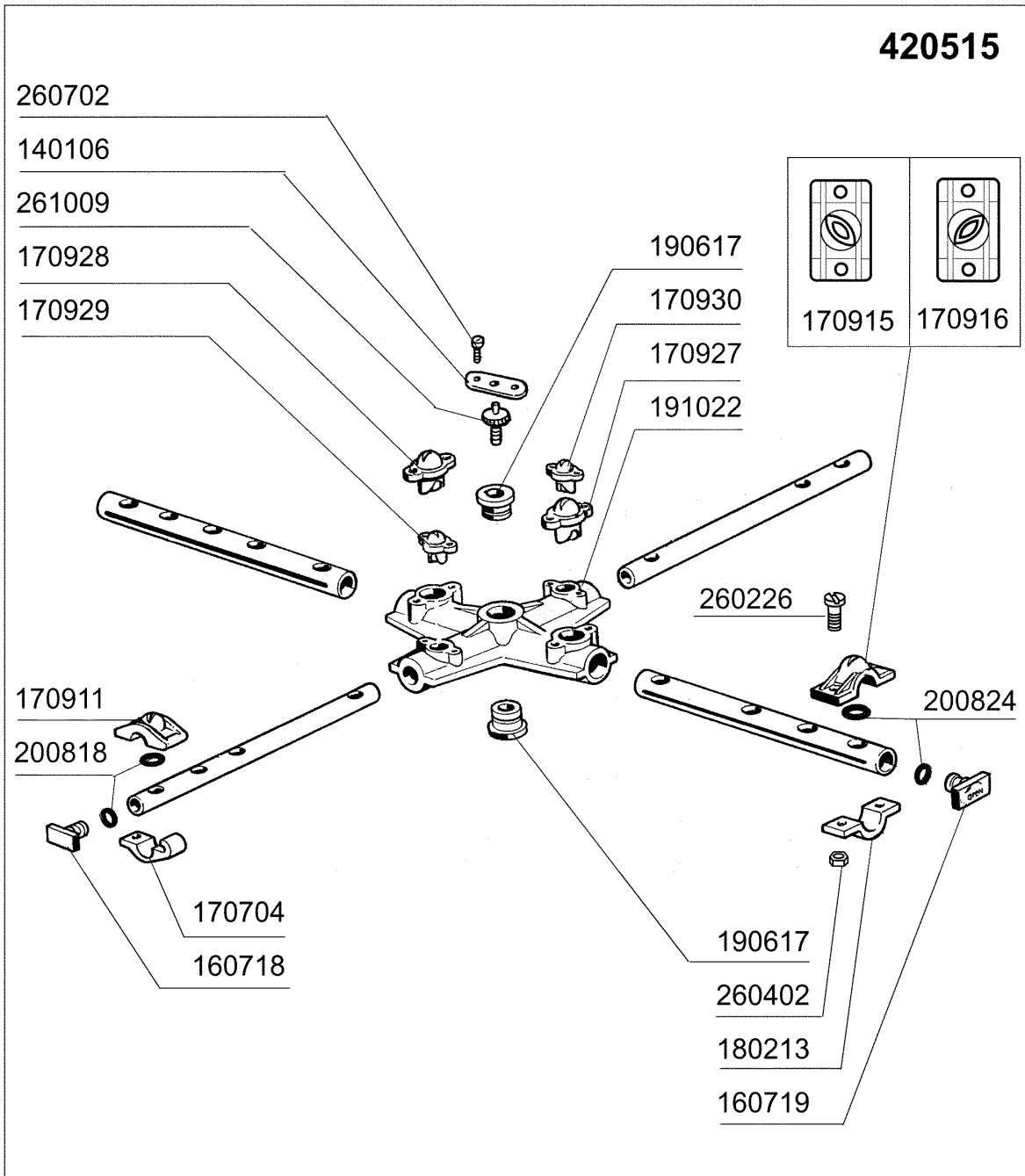
4 - Handle

CODE	DESCRIPTION
150819	CABLE HOLDER PG16 WITH HOLE
190110	SUPPORT HANDLE C30 BLACK
190607	HANDLE BUSH C30-70
191013	HINGE F. SUPPORT C30-C70
191014	FLANGE F. HANDLE C30-70
200451	GASKET COUNTERFL.C30 30X100X3
250206	GRUB SCREW D.6
260148	SCREW TE 8X130
260216	SCREW TCP 6X20
260228	STAINL.ST SPECIAL SCREW 6X42 3
260406	NUT 8MA
260415	STAINLESS STEEL SELF-LOCKING N
260505	STAINL.STEEL FLAT WASHER D8
330204	SPRING HOOK C95/155-LC380
330917	COUNTER FLANGE F.HANDLE SUPP.C
331037	HANDLE C95-155-165 ISOLATED
340493	PIN F. HINGE C30
390133	BACK PANEL C70
391312	SPRING HANDLE C30-C70



5 - Wash

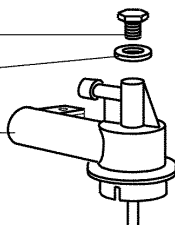
CODE	DESCRIPTION
160115	PL.TUBE.D.9.5 B41 (3/8) C30-
180123	CONNECTION NUT / RINSE 5/8 C30
180409	UPPER CONNECTOR F. WASHING C30
190203	LOWER TEE WASH-RINSE F2-45-55-
190216	UPPER WASH ARM SUPPORT C75
190309	CONNECTION STRAIGHT 3/8"B41C30
190315	ELL RINSE C30-70
191071	LOWER WASH ARM SUPPORT C75
200415	AIR TRAP GASKET -F2 18,5X10X3
200434	GASKET CONNECTION C30 R50
200435	GASKET WASH.F2 D.40 C30-70
200457	GASKET D.24X16X3 NEOPRENE
200798	CONNECTION HOSE FOR C75
200806	O-RING 2,62X13,10X18,34
200820	O-RING151 46,99X5,33X57,6
200829	O-RING 81,92X92,58X5,33
201019	OUTLET HOSE C70/75 BT
201020	WASH PUMP INLET HOSE C70/75 BT
260104	STAINL.ST TE-SCREW A2 6X16 UNI
260106	SCREW TE 6X25
260404	STAINLESS STEEL NUTS D6 UNI 55
260504	ST/ST FLAT WASHER D6
260512	ST/ST GROWER WASHER D6
260530	STAINL.ST WASHER 7X22X2
261005	SCREW F. TEE UP. WASH F2-B41
270118	NUTS FOR ELBOW 5/8 C30-70
341822	PUMP SUPPORT C75BT
420310	LOW./UPP.WASH PIPE C30 - 70
441103	PUMP FEET
450107	CLAMP FE ZN 38-50 H=12,2
450114	CLAMP FE ZN.22-32 H=12,2
450135	CLAMP FE ZN. 44-56 H=12,2
631207	CONDENSER 12,5MF. 450V 85C



6 - Wash arm

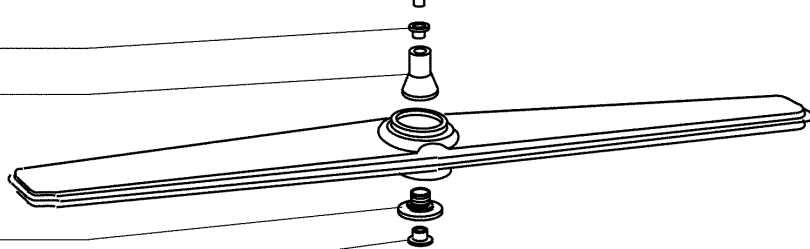
CODE	DESCRIPTION
140106	PLATE F.CLAMP SCREW/WASH-RINSE
160718	PLUG F. RINSE ARM F2-C34M
160719	PLUG FOR WASH ARM D.18
170704	RINSE NOZZLE BOTTOM F-B-C33
170911	RINSE JET B23-F2-C34
170915	RIGHT JET B-F
170916	LEFT JET B-F
170927	WASH JET F2-C-GRAY
170928	IDLE JET F2-C-GRAY
170929	RINSE JET F2-C-GRAY
170930	IDLE JET F2-C-GRAY
180213	FLANGE F.JET LOCKING F2-C34
190617	BUSH
191022	WASH ARM CENTRAL CROSS F-B
200818	O-RING 1,78 X 6,75 X 10,31
200824	O-RING 1,78X12,42X15,98
260226	STAINL.ST TCP SCREW 4X12 A2 UN
260402	STAINLESS STEEL NUT D4 UNI 55
260702	SELF-TAPPING SCREW 4,2X9,5 DIN
261009	RETAIN.SCREW FOR WASH-RINSE AR
420515	WASH-RINSE ARM F45-C85

261005
200415
190216

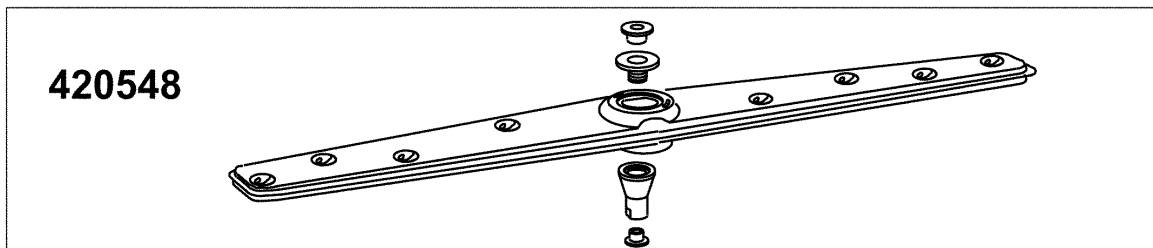


dalla matricola
à partir de la matr.
from serial no. **10/95**
ab Seriennr.
despues la matr.

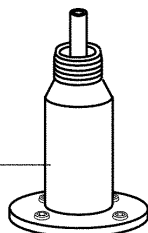
190617
191069



191070
190617



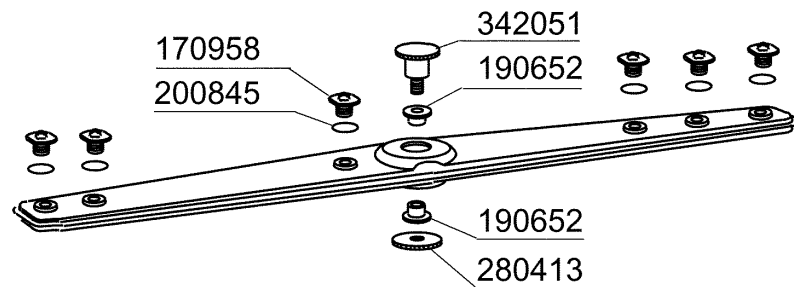
191071



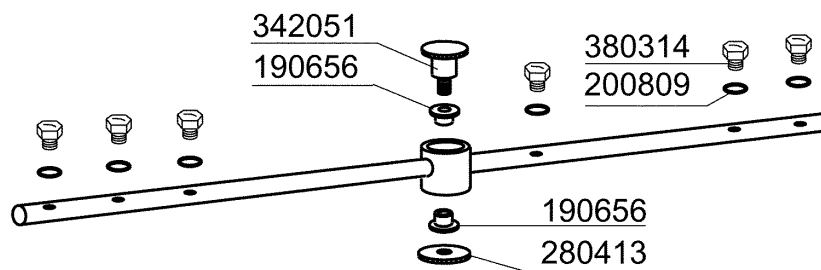
7 - Wash arm

CODE	DESCRIPTION
190216	UPPER WASH ARM SUPPORT C75
190617	BUSH
191069	WASH ARM CENTER (FC - MACHINES
191070	LOCK NUT FOR WASH ARM CENTER (
191071	LOWER WASH ARM SUPPORT C75
200415	AIR TRAP GASKET -F2 18,5X10X3
261005	SCREW F. TEE UP.WASH F2-B41
420548	FC WASH ARM (ST/ST)

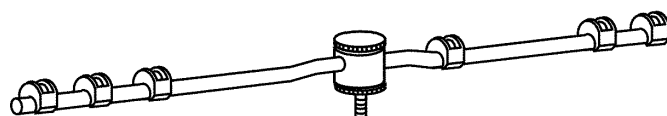
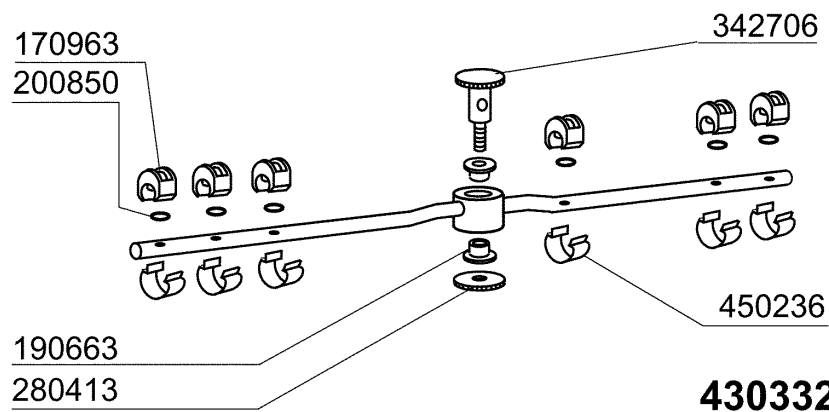
sino alla matricola
jusqu'à la matr.
up to serial no.
bis Seriennr.
hasta la matr.
/10/95



dalla matricola
à partir de la matr.
from serial no.
ab Seriennr.
despues la matr.
11903/11/98



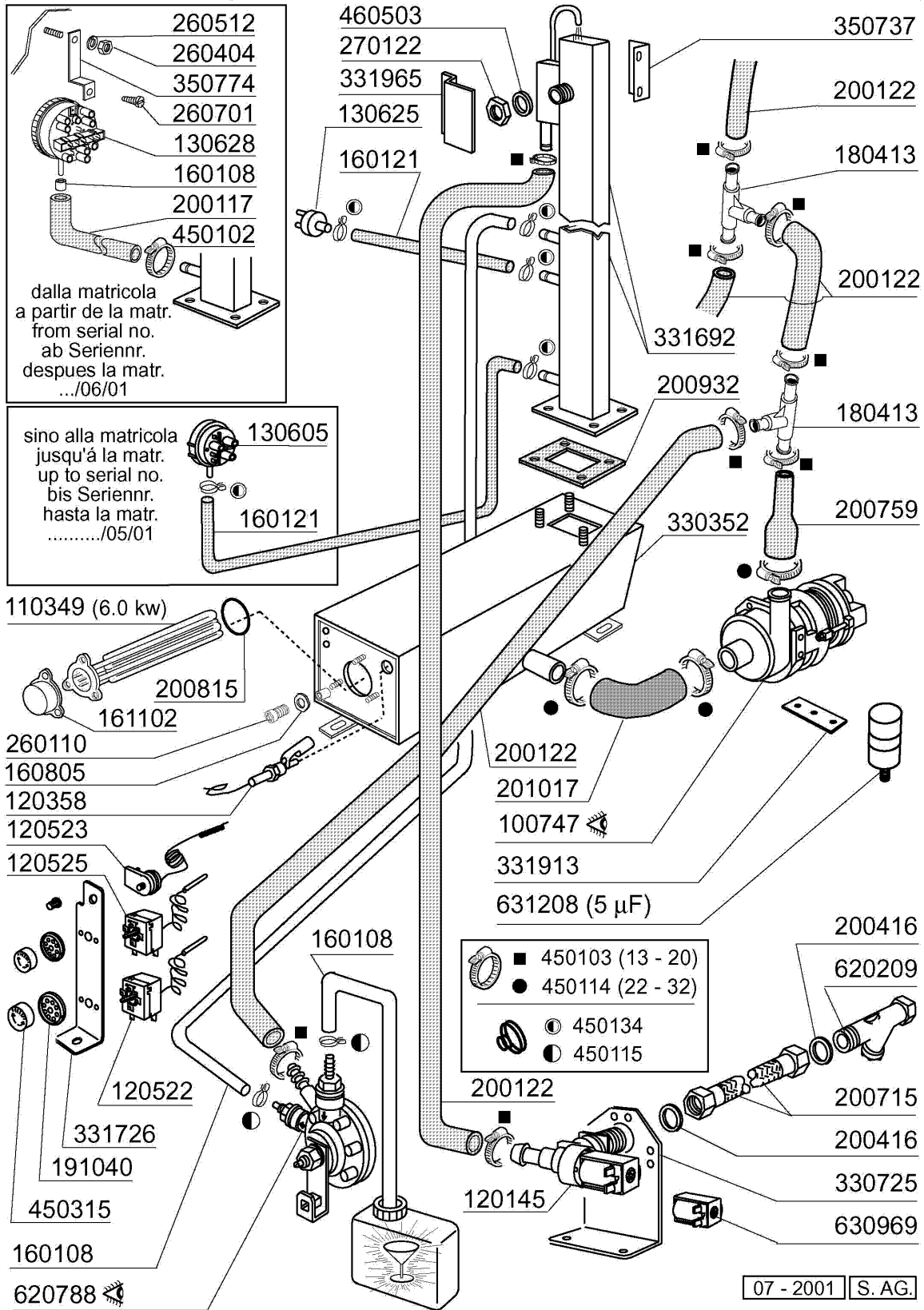
dalla matricola
à partir de la matr.
from serial no.
ab Seriennr.
despues la matr.
3551/04/00



430332

8 - Rinse arm

CODE	DESCRIPTION
170958	RINSE JET FOR FC53-543
170963	RINSE JET X FC
190652	RINSE ARM BUSH FC
190656	BUSH RINSE ARM FC
190663	BUSH
200809	OR GASKET 1,78X8,73X12,29
200845	O RING 109 2,62X9,13X14,37
200850	O-RING
280413	RETAIN.LOCK NUT FOR FC RINSE A
342051	RINSE ARM SUPPORT FC
342706	SHAFT
380314	RINSE JETS 801/HR
430332	RINSE ARM FC 01/00
450236	SPRING FOR WASHER 170963



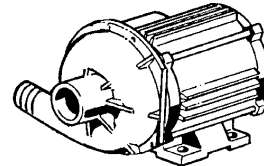
CODE	DESCRIPTION
100747	PUMP KW 0,073 220/240-50 4208
110349	HEAT.ELEMENT 6000W 230/400V
120145	SOLENOID VALVE 12 LT 1 WAY
120358	FLOATING MAGN.SWITCH
120522	TANK THERMOSTAT 90Ø
120523	SAFETY THERMOSTAT 110Ø
120525	BOOSTER THERMOSTAT 2 TEMPERAT.
130605	PRESSURE SWITCH 50-30 1 LEVEL
130625	PRESSURE SWITCH
130628	PRESSURE SWITCH
160108	INJECT.INLET HOSE D.8X5
160121	HOSE EPDM D. 5 X 9
160805	GASKET D.8
161102	ELEMENT COVER MOPL.
180413	TEE NIPPLE D.11,5 - RINSE ASSE
191040	FRAME F.THERMOSTAT KNOB
200117	RUBBER HOSE 7X16
200122	HOSE 11X19
200416	GASKET D. 3/4"
200715	HOSE WATER INLET 2M STAINL.ST
200759	DELIVERY HOSE FOR ECORINSE AC-
200815	O-RING F. HEAT.ELEM.
200932	BOILER GASKET
201017	RINSE PUMP INLET HOSE LF/FC BT
260110	SCREW TE 8X10
260404	STAINLESS STEEL NUTS D6 UNI 55
260512	ST/ST GROWER WASHER D6
260701	SCREW 3,5X9,5
270122	NUTS D.3/4" FOR BREAK TANK
330352	BOILER FOR BREAK TANK
330725	STANDARD BRACKET F.SOLEN.VALV
331692	BREAK TANK "C-LC"
331726	BRACKET FOR 3 THERMOSTATS
331913	BRACKET
331965	BRACKET
350737	BRACKET FOR CLOSED THERMOSTATS
350774	BRACKET
450102	CLAMP FE ZN 11-17 H=9
450103	CLAMP FE ZN. 13-20 H=9
450114	CLAMP FE ZN.22-32 H=12,2
450115	ELASTIC CLAMP D.8,3/7,8
450134	ELASTIC HOSE CLIP D.9,3/8,8
450315	KNOB F. THERMOSTAT 90Ø
460503	SEALING WASHER 38X27X2(3/4)
620209	INLET WATER FILTER
620788	RINSE AID INJECTOR H21428
630969	COIL S4216 220/50HZ
631208	CONDENSER 5MF.450V

POMPA LAVAGGIO - POMPE LAVAGE
 WASH PUMP - WASCHPUMP - BOMBA LAVADO

100384 (220/240 V 50 Hz)

100612 (220 V 60 Hz)

HP 1 - Kw 0,75 (1219)

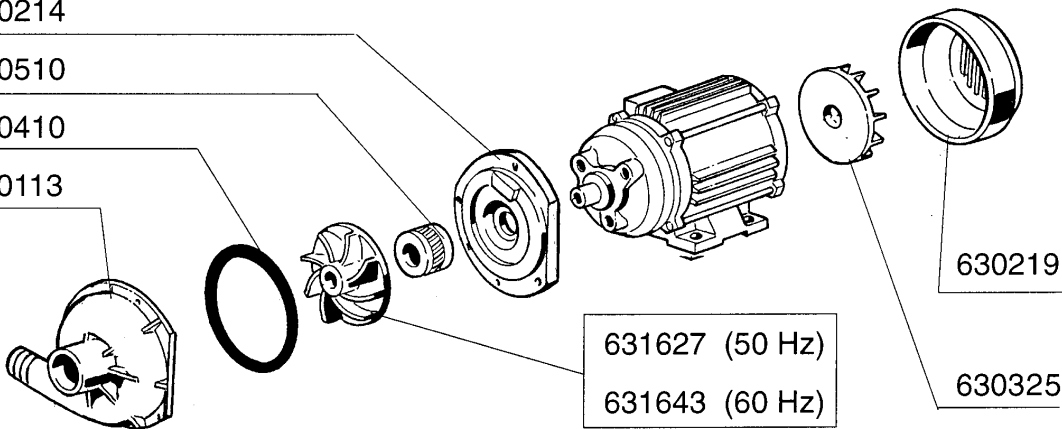


630214

630510

630410

630113



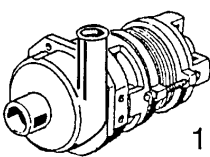
630219

631627 (50 Hz)

631643 (60 Hz)

630325

POMPA A PRESSIONE - AUGMENTATION PRESS. EAU
 RINSE BOOSTER PUMP - DRUCKERNOEHUNGS PUMPE - BOMBA AUMENTO PRESION
 Kw 0,073

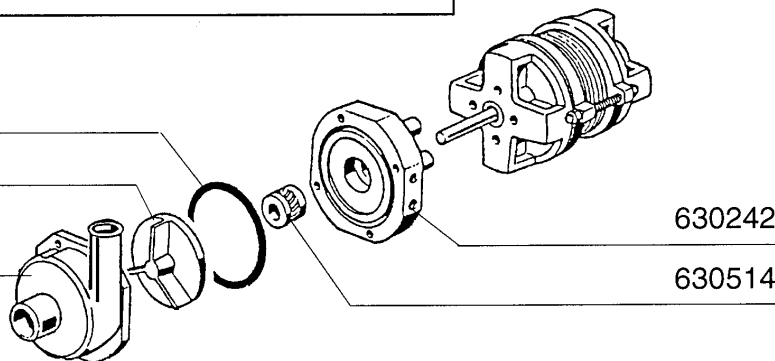


100747 220/240 V 50 Hz

630416

631640 (50 Hz)

630131

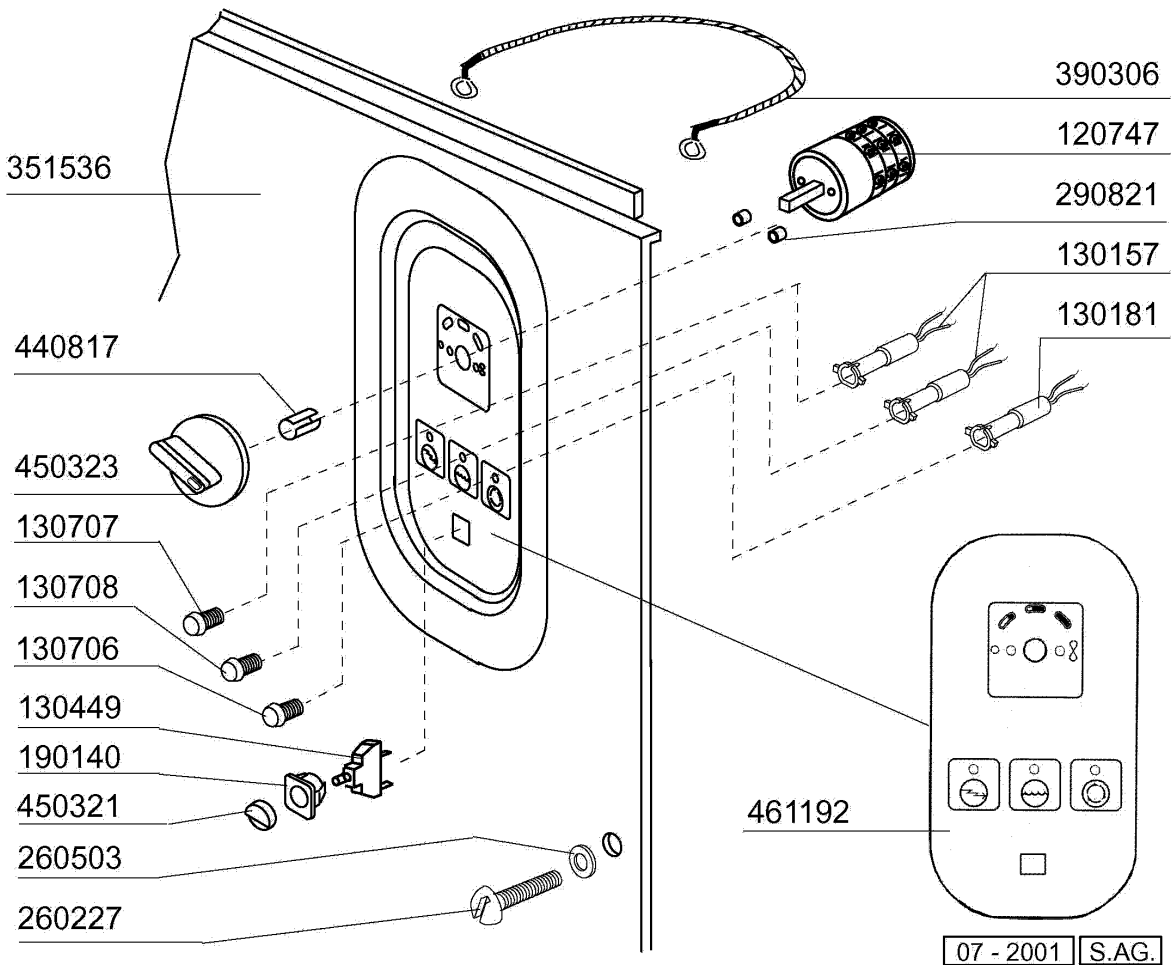
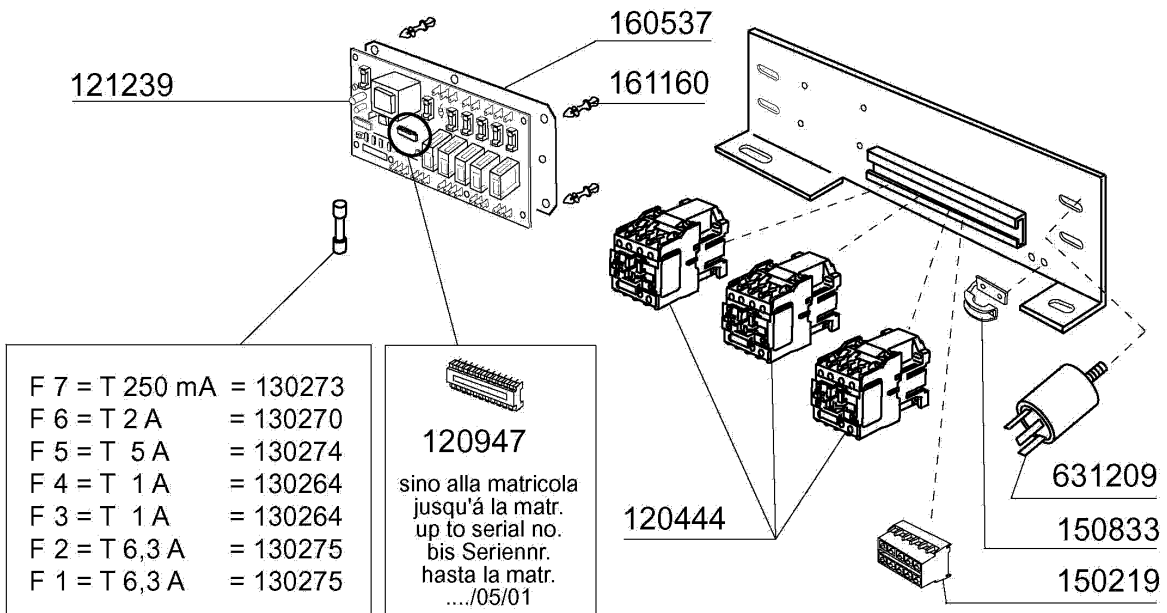


630242

630514

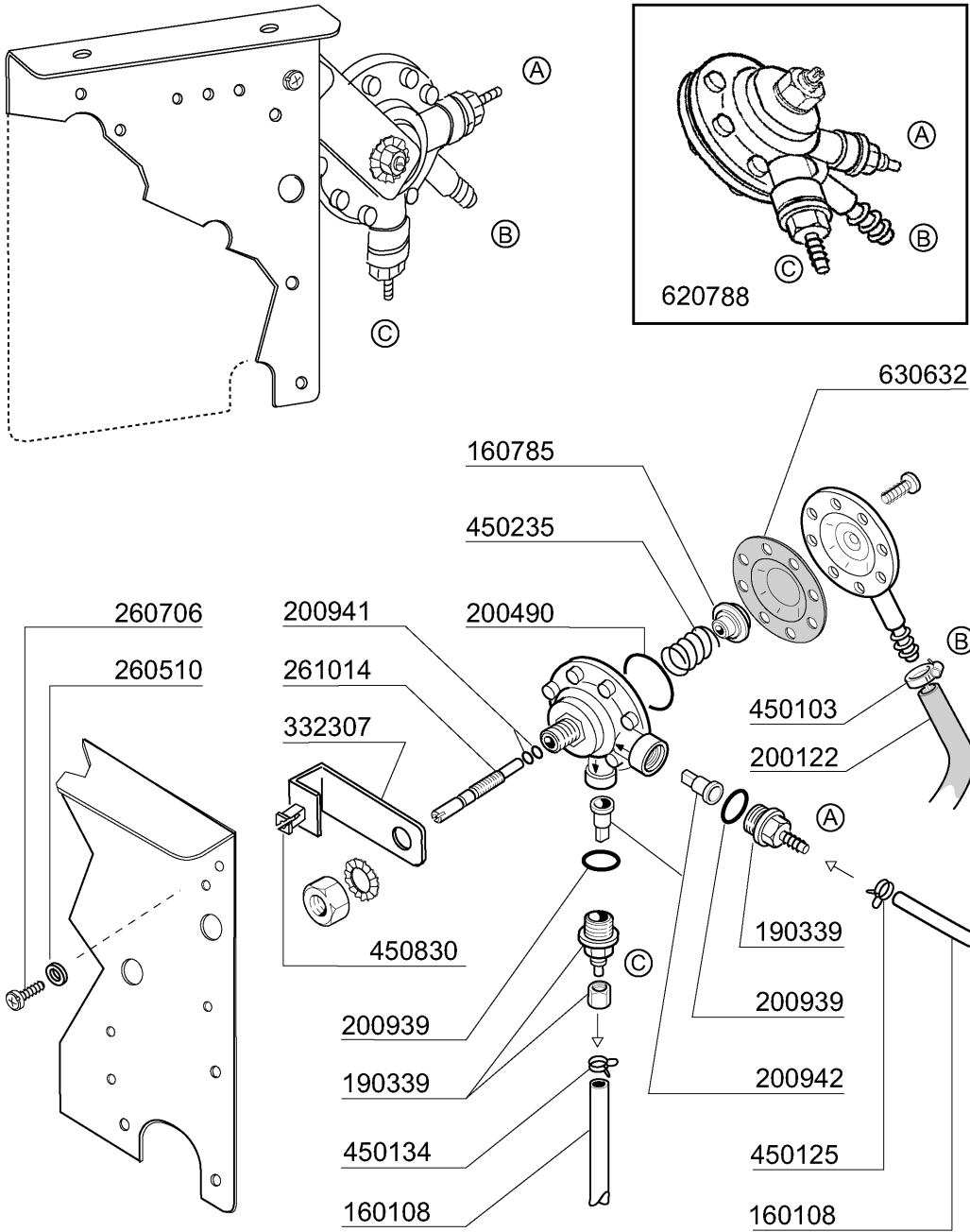
10 - Pump

CODE	DESCRIPTION
100384	PUMP HP 1 240/1-50HZ-1219 1219
100612	PUMP HP 1 220/1/60HZ F 1219
100747	PUMP KW 0,073 220/240-50 4208
630113	VOLUTE FIR HP0,5-1,55
630131	VOLUTE PUMP FIR T.4208
630214	FLANGE PUMP HP0,75-1-1,5
630219	FAN HOUSING FIR HP.0,75-1
630242	BACKPLATE FIR T.4208
630325	COOLING FAN F.PUMP 1219/2241
630410	O-RING PUMP FI HP0,5-0,75-1
630416	OR FOR VOLUTE 0,12/0,3
630510	PUMP SEAL HP0,5-0,75
630514	PUMP SEAL FIR4208
631627	PUMP IMPELLER FI D103 HP 1-1,5
631640	IMPELLER HP0,20/2212-8/5HZ
631643	IMPELLER HP1/1,5 60HZD.90-1219



11 - Control Box

CODE	DESCRIPTION
120444	CONTACTOR 9A 220V 50HZ
120747	SWITCH
120947	EPROM UNICOM BT
121239	ELECTR.TIMER UNICOM FOR BREAK
130157	GREEN LED FOR BR-BC-C-SERIES -
130181	GREEN LAMP 24V
130264	FUSE 5X20 1A
130270	FUSE 5X20 2A
130273	FUSE 5X20 250MA GLAS
130274	FUSE 5X20 5A GLAS
130275	FUSE 5X20 6,3A GLAS
130449	PUSH BUTTON BR-BC-FC
130706	ORANGE LENS COVERS (C-SERIES)
130707	TRANSPARENT LENS COVERS (C-SER)
130708	GREEN LENS COVERS (C-SERIES)
150219	TERMINAL BLOCK 5P MMQ165VD26
150833	CABLE HOLDER BC/BR
160537	ELECTRONIC CARD SPACER
161160	PROTECTION ELECT.CARD C/F
190140	BUTTON HOLDER BR-BC-FC
260227	M5 X 30 MUSHROOM HEAD SCREW
260503	STAINL.STEEL FLAT WASHER D5 UN
290821	DISTANCE PIECE FOR SWITCH
351536	FRONT PANEL
390306	CABLE
440817	SNAP RING LSCB/1853/17/00
450321	GREY COVER FOR PUSH BUTTON BR-
450323	KNOB FOR BC-BR-C95-C155
461192	CONTROL PANEL C75 ELECTR. TIME
631209	ANTI-NOISE FILTER



07/2008 M.SA

12 - Rinse aid injector

CODE	DESCRIPTION
160108	INJECT.INLET HOSE D.8X5
160785	GUIDE FOR SPRING RINSE AID INJ
190339	RINSE AID INJECTOR CONNECTION
200122	HOSE 11X19
200490	PROTECTION GASKET MOD.ADV.
200939	OR GASKET
200941	OR GASKET
200942	VALVE RINSE INJECTOR HVD
260510	GROWER WASHER D.4
260706	SCREW 3,9X13 S/S
261014	SCREW
332307	BRACKET
450103	CLAMP FE ZN. 13-20 H=9
450125	ELASTIC CLAMP D. 10,4X9,8
450134	ELASTIC HOSE CLIP D.9,3/8,8
450235	SPRING RINSE AID INJECTOR
450830	SCREW
620788	RINSE AID INJECTOR H21428
630632	DIAPHRAGM RINSE INJECTOR HVD